

Rated current: 6A
 Rated voltage: 150V
 Use wire diameter: 26-18AWG
 spacing:2.54mm
 Install:

The catalog is for reference only. The actual specifications are subject to the product engineering drawings. version 1.0

UL/CUL

Use Group	B	C	D
Rate Voltage [V]	150	-	-
Rated Current [A]	6	-	-
Wire Range [AWG]	26-18		
Dielectric Voltage-Withstand	1.3KV		

IEC

Overvoltage Category	III	III	II
Contamination Class	3	2	2
Rated Voltage [V]	32	160	320
Rated Current [A]	6	6	6

Impulse withstand voltage [KV]	2.5	2.5	2.5
Conductor cross section [mm ²]	0.14-0.5		

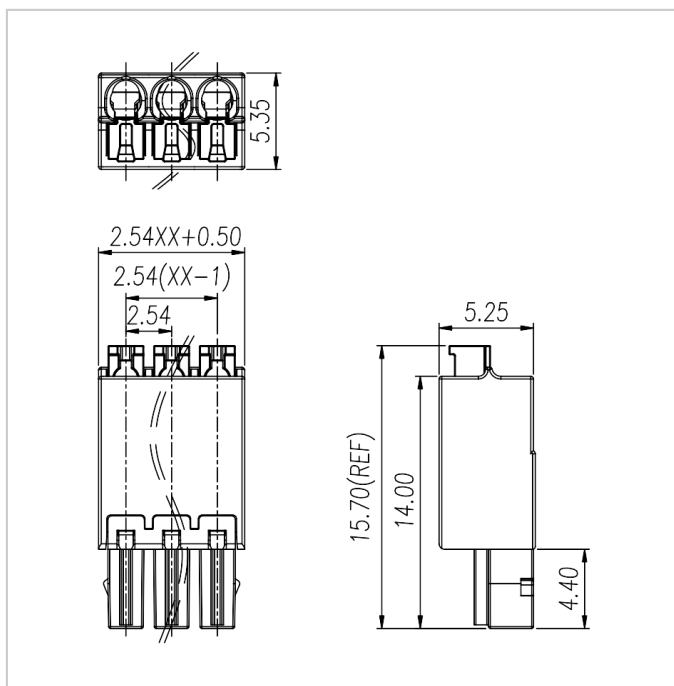
Material

Insulation Material	LCP
Flame retardant rating	UL94V-0
Conductor Material	Copper alloy
Plating of conductor surface	Sn plated

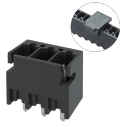
Other Date

Pitch/Poles [mm]/[P]	2.54/2-24
Stripping Length [mm]	7-8
Screw/Torque(Max)[N.m]	-
Operating temperature [°C]	-40 ~ +130

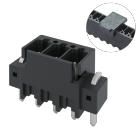
Dimensions



Accessories



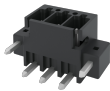
WJ15VD-THR-2.54



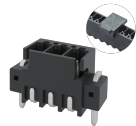
WJ15VDM-THR-2.54



WJ15RD-THR-2.54



WJ15RDM-THR-2.54



WJ15VDSM-THR-2.54



WJ15RDSM-THR-2.54