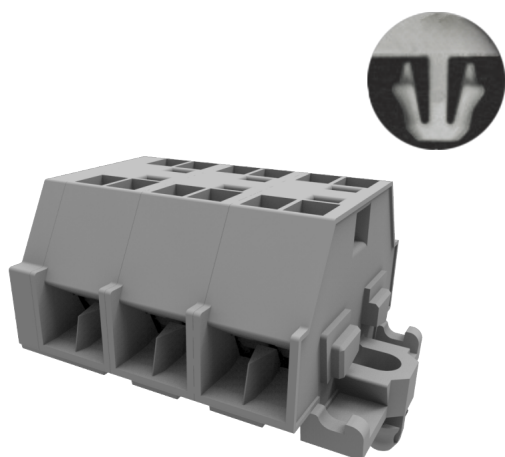


GWS1.5BJ

GWS Spring-Cage Type DIN-Rail TB

Download Date:2026-07-08



Rated current: 10A

Rated voltage: 300V

Use wire diameter: 28-16AWG



The catalog is for reference only. The actual specifications are subject to the product engineering drawings. version 1.0

UL (1059)

Use Group	B	C	D
Rate Voltage [V]	300	300	600
Rated Current [A]	10	10	5
Wire Range [AWG]	28 ~ 16		

IEC

Rated Voltage [V]	400
Rated Current [A]	18
Soild [mm ²]	0.2-1.5
Flexible [mm ²]	0.2-1.5
Overvoltage Category	III

Contamination Class	3
Impulse withstand voltage [KV]	6

Material

Insulation Material	PA66
Flame retardant rating	UL94V-0
Conductor Material	Copper alloy
Plating of conductor surface	Sn plated

Other Date

Stripping Length [mm]	8-9
-----------------------	-----

Dimensions

