

插拔式连接器

额定电流: 6A

额定电压: 150V

使用线径: 26-18AWG

间距:2.54mm

安装: 直插式弹簧连接

目录仅供参考，实际规格依产品工程图为准 版本1.0

技术数据-UL/CUL

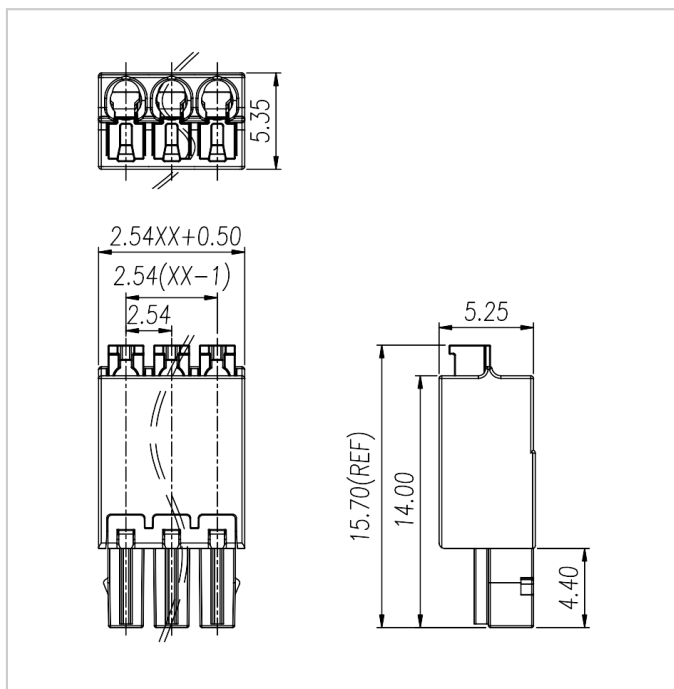
等级 Use Group	B	C	D
额定电压 Rate Voltage [V]	150	-	-
额定电流 Rated Current [A]	6	-	-
接线范围 Wire Range [AWG]		26-18	
耐电压 Dielectric Voltage-Withstand		1.3KV	

技术参数-IEC

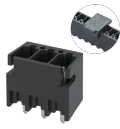
过电压类别 Overvoltage Category	III	III	II
污染等级 Contamination Class	3	2	2
额定电压 Rated Voltage [V]	32	160	320
额定电流 Rated Current [A]	6	6	6
额定冲击电压 Impulse withstand voltage [KV]	2.5	2.5	2.5

导线截面积[硬/柔] Conductor cross section [mm ²]	0.14-0.5
材料 Material	
绝缘材料 Insulation Material	LCP
阻燃等级 Flame retardant rating	UL94V-0
导体材料 Conductor Material	Copper alloy
导体表面镀层 Plating of conductor surface	Sn plated
一般参数 Other Date	
间距/极数 Pitch/Poles [mm]/[P]	2.54/2-24
剥线长度 Stripping Length [mm]	7-8
螺丝/扭矩 Screw/Torque(Max)[N.m]	-
工作温度 Operating temperature [°C]	-40 ~ +130

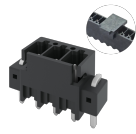
尺寸图



适配产品



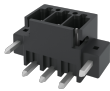
WJ15VD-THR-2.54



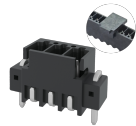
WJ15VDM-THR-2.54



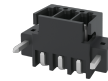
WJ15RD-THR-2.54



WJ15RDM-THR-2.54



WJ15VDSM-THR-2.54



WJ15RDSM-THR-2.54