

插拔式连接器

额定电流: 10A

额定电压: 300V

使用线径: 26-16AWG

间距:3.5mm

安装: 直插式弹簧连接



目录仅供参考，实际规格依产品工程图为准 版本1.0

技术数据-UL/CUL

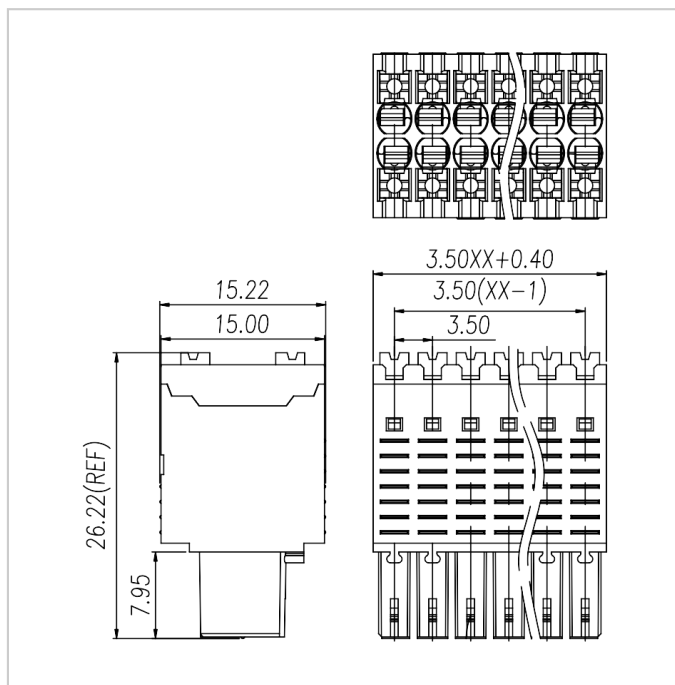
等级 Use Group	B	C	D
额定电压 Rate Voltage [V]	300	50	300
额定电流 Rated Current [A]	10	10	10
接线范围 Wire Range [AWG]	26-16		
耐电压 Dielectric Voltage-Withstand	1.6KV		

技术参数-IEC

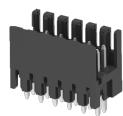
过电压类别 Overvoltage Category	III	III	II
污染等级 Contamination Class	3	2	2
额定电压 Rated Voltage [V]	160	160	320
额定电流 Rated Current [A]	13.4	13.4	13.4
额定冲击电压 Impulse withstand voltage [KV]	2.5	2.5	2.5

导线截面积[硬/柔] Conductor cross section [mm ²]	0.2-1.5
材料 Material	
绝缘材料 Insulation Material	PA66
阻燃等级 Flame retardant rating	UL94V-0
导体材料 Conductor Material	Copper alloy
导体表面镀层 Plating of conductor surface	Sn plated
一般参数 Other Date	
间距/极数 Pitch/Poles [mm]/[P]	3.5/2*2-2*24
剥线长度 Stripping Length [mm]	10-11
螺丝/扭矩 Screw/Torque(Max)[N.m]	-
工作温度 Operating temperature [°C]	-40 ~ +105

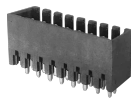
尺寸图



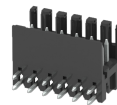
适配产品



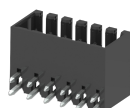
WJ15EDGVHS-THR-3.5



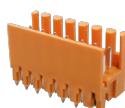
WJ15EDGVHSC-THR-3.5



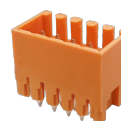
WJ15EDGRHS-THR-3.5



WJ15EDGRHSC-THR-3.5



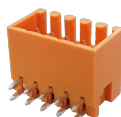
WJ15EDGVHS-3.5



WJ15EDGVHSC-3.5



WJ15EDGRHS-3.5



WJ15EDGRHSC-3.5